

TBX FLANGES

FLANGE WELDING NECK ASTM A-105

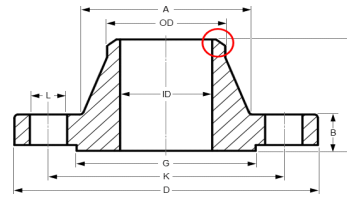
USO: En aplicaciones de piping, para conectar extremos de cañerías, accesorios y/o equipos.

PROPIEDADES: Adaptabilidad a temperaturas extremas, excelente soldabilidad.

CLASE: 300

DIÁMETROS: Desde 1/2" hasta 24"

CARA: RF (Raised Face)



Diámetro nominal	Brida				Cuello		Resalte	Taladros			Peso Aprox. Kg/Und.
	D	ID	B	H	A	OD	G	Numero	L	K	
	mm.	mm.	mm.	mm.	mm.	mm.	mm.		mm.	mm.	
1/2"	95.2	15.75	14.3	52.4	38.1	21.3	34.9	4	15.9	66.7	0.9
	3 3/4	0.62	9/16	2 1/6	1 1/2	0.84	1 3/8		5/8	2 5/8	
3/4"	117.5	20.8	15.9	57.1	47.6	26.7	42.9	4	19.05	82.5	1.5
	4 5/8	0.82	5/8	2 1/4	1 7/8	1.05	1 11/16		3/4	3 1/4	
1"	123.8	26.7	17.5	61.9	54	33.5	50.8	4	19.05	88.9	1.9
	4 7/8	1.05	11/16	2 1/4	2 1/8	1.32	2		3/4	3 1/2	
1 1/4"	133.35	35.05	19.1	65.1	63.5	42.2	63.5	4	19.05	98.4	2.6
	5 1/4	1.38	3/4	2 9/16	2 1/2	1.66	2 1/2		3/4	3 7/8	
1 1/2"	155.6	40.9	20.6	68.3	69.9	48.3	73	4	22.2	114.3	3.3
	6 1/8	1.61	13/16	2 11/16	2 3/4	1.9	2 7/8		7/8	4 1/2	
2"	165.1	52.6	22.2	69.9	84.1	60.45	92.1	8	19.05	127	3.6
	6 1/2	2.07	7/8	2 3/4	3 5/16	2.38	3 5/8		3/4	5	
2 1/2"	190.5	62.7	25.4	76.2	100	73.15	104.8	8	22.2	149.2	5.4
	7 1/2	2.47	1	3	3 15/16	2.88	4 1/8		7/8	5 7/8	
3"	209.55	78	28.6	79.4	117.5	88.9	127	8	22.2	168.3	7.4
	8 1/4	3.07	1 1/8	3 1/8	4 5/8	3.5	5		7/8	6 5/8	
4"	254	102.4	31.8	85.7	146.05	114.3	157.2	8	22.2	200	11.9
	10	4.03	1.25	3 3/8	5 3/4	4.5	6 3/16		7/8	7 7/8	
5"	279.4	128.3	34.9	98.4	177.8	141.2	185.7	8	22.2	215.95	16
	11	5.05	1 3/8	3 7/8	7	5.56	7 1/3		7/8	9.25	
6"	317.5	154.2	36.5	98.4	206.4	168.4	215.9	12	22.2	269.9	20.2
	12 1/2	6.07	1.4375	3 7/8	8 1/8	6.63	8 1/2		7/8	10 5/8	
8"	381	202.7	41.3	111.1	260.35	219.2	269.9	12	25.4	330.2	31
	15	7.98	1 5/8	4 3/4	10 1/4	8.63	10 5/8		1	13	
10"	444.5	254.5	47.6	117.5	320.7	273	323.8	16	28.6	387.3	44.3
	17 1/2	10.02	1.875	4 5/8	12 5/8	10 3/4	12 3/4		1 1/8	15 1/4	
12"	520.7	304.8	50.8	130.2	374.6	323.8	381	16	31.7	450.8	64
	20 1/2	12	2	5 1/8	14 3/4	12.75	15		1 1/4	17.75	
14"	584.2		54	142.9	425.4	355.6	412.7	20	31.7	514.3	88
	23		2.125	5 5/8	16 3/4	14	16.25		1 1/4	20 1/4	
16"	647.7		57.2	146.05	482.6	406.4	469.9	20	34.9	571.5	113
	25 1/2		2 1/4	5 3/4	19	16	18 1/2		1 3/8	22.5	
18"	711.2		60.3	158.75	533.4	457.2	533.4	24	34.9	628.6	134
	28		2.375	6 1/4	21	18	21		1 3/8	24 3/4	
20"	774.7		63.5	161.9	587.4	508	584.2	24	34.9	685.8	171
	30 1/2		2 1/2	6 3/8	23 1/8	20	23		1 3/8	27	
22"	838.2		66.7	165.1	641.35	558.8	641.35	24	41.3	742.9	195
	33		2.625	6 1/2	25 1/4	22	25.25		1 5/8	29 1/4	
24"	914.4		69.9	168.3	701.7	609.6	692.1	24	41.3	812.8	238
	36		2 3/4	6 5/8	27 5/8	24	27 1/4		1 5/8	32	